

NATIONAL
MUSEUM *of*
**NATURAL
HISTORY**

Hall of Human Origins

Pre-Visit Story

Morning at the Museum

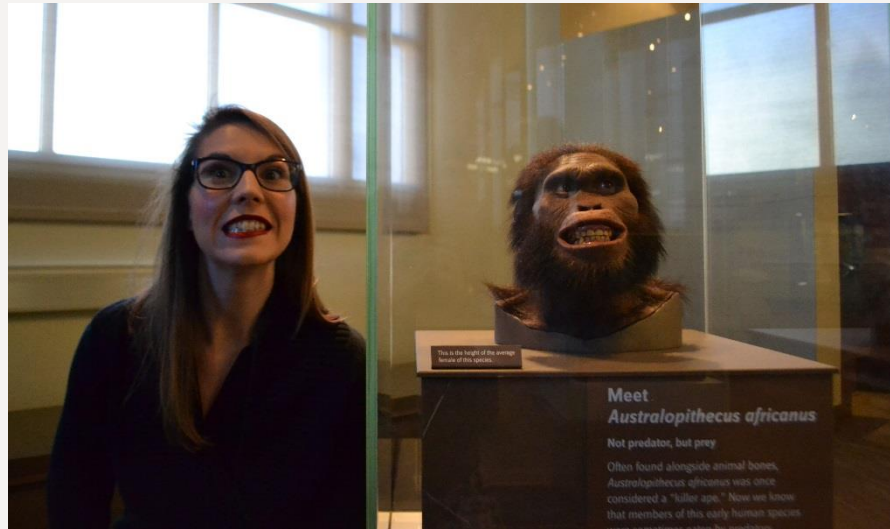


Hall of Human Origins Exhibit



- When I am at the National Museum of Natural History, I can visit the Hall of Human Origins.
- The Hall of Human Origins Exhibit tells the story of how humans have changed over the last 6 million years.

Faces of Early Humans



- When I visit the Human Origins Exhibit, I will see faces of early humans.
- Early humans may look different than me.
- Some of the faces may look like real faces. I know they are fake.

Bones and Skulls



- I will also see skulls and bones of early humans.
- I can touch some skulls.
- If I find parts of the exhibit scary, I do not have to look at them.

The Cave



- There is a cave that has drawings on the wall.
- This cave is dark.
- I can go into the cave.
- If I do not want to go into the cave, I can walk past the cave.

Things I May Hear and See



- When I walk through the exhibit, I may hear a flute playing.
- I can stop and listen or I can keep walking if I do not want to listen.
- There are videos playing.
- I will hear people talking in them.
- I can stop and watch or I can keep walking if I do not want to watch.

Using Touch Screen Computers



- When I visit the Human Origins Exhibit, I will see many computers that I can use.
- It is okay for me to touch the screens.
- They will teach me about early humans.
- If I need help, I can ask my adult.

Statues



- There are statues in the exhibit.
- I can look at and touch these statues.
- They are statues of early humans.

Footprints



- There are footprints in the exhibit.
- They aren't real fossils they are replicas.
- I can try to walk like early humans.

Exiting the Exhibit



- There is a short tunnel that is dark and has flashing lights.
- I will hear a loud voice talking and see pictures on a screen.
- I can walk through the tunnel.
- If I do not want to walk through the tunnel, I can go back to the Mammal Hall.

The background of the slide is a grayscale image of a large, ornate ceramic vase. The vase features intricate patterns, including a central figure of a bird-like creature with long legs and a long neck, possibly a quetzal or a similar mythical bird. The vase is decorated with various motifs, including floral designs and geometric patterns. The overall style is reminiscent of traditional Mesoamerican or Andean pottery.

Authors:
Alyssa Reiter, OTS
Smithsonian Institution fellow
University of the Sciences, Philadelphia, PA

Roger Ideishi, JD, OT/L, FAOTA Department of
Rehabilitation Sciences temple University,
Philadelphia, PA

Revised:

2024, Access Smithsonian
2017, Office of Education and Outreach
Branch of Learning Venues and Visitor Experience



Smithsonian
National Museum of Natural History